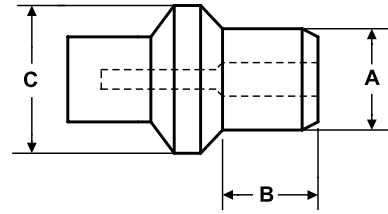




Series BTP : SILICONE BLIND HOLE THREAD PLUGS

- plug flange designed to mask off the lead-in chamfer of blind threaded holes.
- pull tab for easy removal.
- the plug diameter (A) should be at least 5% larger than the hole diameter.
- temperature resistant up to 315°C / 600°F and durable for repeat use.

PART NUMBER	FITS THREAD	A	B	C	A	B	C	QTY PER BAG
		I N C H E S	M I L L I M E T E R S					
BTP-M6	M6	0.210	0.200	0.250	5.33	5.08	6.35	500
BTP-M8	M8	0.283	0.197	0.331	7.19	5.00	8.41	500
BTP-M10	M10	0.358	0.241	0.409	9.09	6.12	10.39	250
BTP-M12	M12	0.426	0.346	0.489	10.82	8.79	12.42	250
BTP-M16	M16	0.583	0.408	0.670	14.81	10.36	17.02	100
BTP-M20	M20	0.724	0.512	0.811	18.39	13.00	20.60	100
BTP-375	3/8	0.336	0.250	0.385	8.53	6.35	9.78	500
BTP-500	1/2	0.451	0.352	0.510	11.46	8.94	12.95	250



BTP SERIES BLIND HOLE THREAD PLUGS