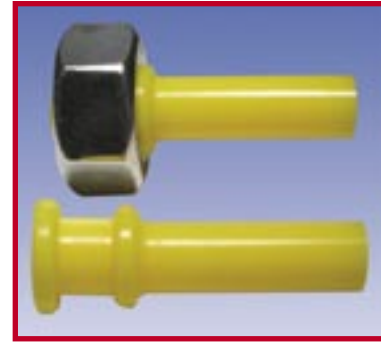
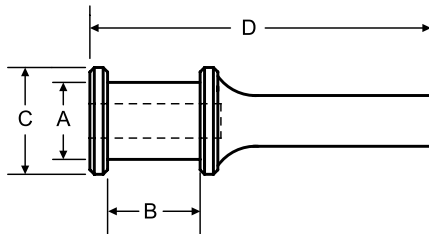


## Series DFP : SILICONE DUAL FLANGE PULL PLUGS

- these pull plugs are ideal for masking weld nuts or other threaded through hole applications for painting or weld splatter.
- masks off the thread chamfer, first and last threads.
- the bore allows enough flexibility to compress during plug application and removal.
- temperature resistant up to 315°C / 600°F and durable for repeat use.



PART NUMBER	COLOUR	FITS THREAD	A	B	C	D	A	B	C	D	QTY PER BAG				
			I	N	C	H	E	S	M	I		L	L	M	E
DFP-M8	Blue	M8	0.261	0.310	0.375	1.350	6.63	7.87	9.53	34.29	1000				
DFP-M10	Pink	M10	0.335	0.354	0.445	1.339	8.51	8.99	11.30	35.00	500				
DFP-M12	Yellow	M12	0.400	0.460	0.520	1.750	10.16	11.68	13.21	44.45	500				
DFP-M16	Green	M16	0.530	0.550	0.669	1.970	13.46	13.97	16.99	50.04	250				



DFP SERIES DUAL FLANGE PULL PLUGS