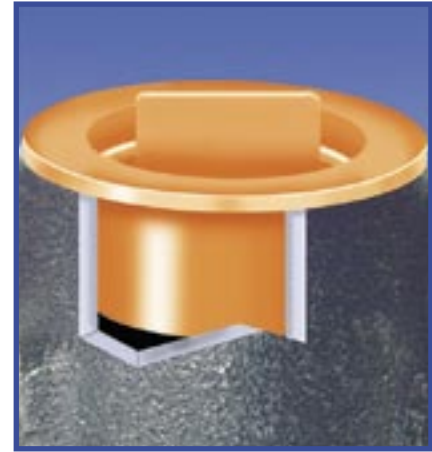


## extra-wide flange centre-pull plugs

This tapered plug features a centre pull-tab design that extends above the flange making it easy to remove. The extra-wide flange design protects more surface area and prevents improper installation.

**When used as a PLUG:** "B" dimension should be at least .020" more than diameter to be plugged. Larger diameters may require more interference.

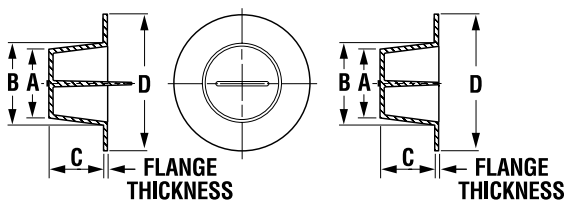


### Specifications

- Material: Low-Density Polyethylene
- Colour: Orange

Part Number	To Plug Thread Sizes				Dimensions								Flange Thickness	Standard Package	
	NPT/ BSP	Standard	Metric	Hole	A		B		C		D			Pieces	Lbs.
					in	mm	in	mm	in	mm	in	mm			
* 662	—	9/16	—	1/2	.480	12.19	.540	13.72	.53	13.46	1.25	31.75	.030	5000	12
242-W-P	—	11/16	M18x1.5	5/8	.590	14.99	.647	16.43	.50	12.70	1.06	26.92	.030	5000	13
* 663	1/2	—	—	3/4	.730	18.54	.790	20.07	.50	12.70	1.50	38.10	.030	3000	11
246-W-P	—	7/8	M24	—	.752	19.10	.849	21.56	.50	12.70	1.31	33.27	.032	2500	9
* 664	3/4	—	—	1	.980	24.89	1.040	26.42	.53	13.46	1.88	47.75	.040	1500	10
248-W-P	—	1-1/16	M27x2	—	.921	23.39	1.075	27.31	.75	19.05	1.62	41.15	.060	1500	12
153-2-W-P	—	—	—	—	1.003	25.48	1.144	29.06	.75	19.05	1.75	44.45	.070	1000	11
250-W-P	—	1-5/16	M33x2/M36	—	1.202	30.53	1.297	32.94	.75	19.05	1.88	47.75	.062	1000	11
* 665	—	—	—	1-1/4	1.230	31.24	1.290	32.77	.50	12.70	2.00	50.80	.040	1000	10
* 666	—	—	—	1-1/2	1.460	37.08	1.550	39.37	.75	19.05	2.38	60.45	.050	500	9
194-W-P	1-1/4	1-5/8	—	—	1.519	38.58	1.602	40.69	.75	19.05	2.25	57.15	.062	500	7
196-3-W-P	—	—	—	—	1.807	45.90	1.932	49.07	.75	19.05	2.53	64.26	.050	500	9
* 667	2	—	—	2	1.960	49.78	2.050	52.07	.75	19.05	2.75	69.85	.050	500	11
* 668	—	—	—	2-1/2	2.460	62.48	2.550	64.77	.75	19.05	3.25	82.55	.050	250	8

\* 660 Series have a tab flush with flange (see drawing).



\*660 SERIES