

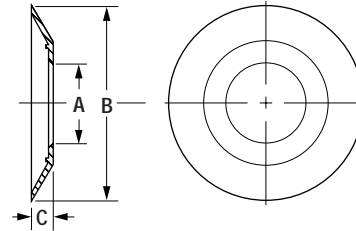
# finishing flanges (non-corroding)



Low-cost replacement for metal flanges used in plumbing, water heaters, refrigeration and machinery industries. Durable and non-corroding for a long-lasting, attractive, finished appearance.

### Specifications

- Material: Low-Density Polyethylene
- Colour: White



| Part Number | Description<br>Common Uses | Dimensions |         |      |         |     |         | Standard Package |      |
|-------------|----------------------------|------------|---------|------|---------|-----|---------|------------------|------|
|             |                            | in         | A<br>mm | in   | B<br>mm | in  | C<br>mm | Pieces           | Lbs. |
| 179-1       | Fits 1/4" Pipe             | .531       | 13.49   | 2.12 | 53.85   | .20 | 5.08    | 3000             | 25   |
| 179-7       | Fits 1/4" Pipe             | .625       | 15.88   | 2.12 | 53.85   | .20 | 5.08    | 3000             | 25   |
| 179-3       | Fits 1/2" Pipe             | .812       | 20.62   | 2.12 | 53.85   | .20 | 5.08    | 3000             | 22   |
| 180         | Fits 3/4" Pipe             | 1.000      | 25.40   | 2.88 | 73.15   | .44 | 11.18   | 2000             | 25   |
| 182         | Fits 3/4" Pipe             | 1.000      | 25.40   | 3.25 | 82.55   | .31 | 7.87    | 1000             | 15   |
| 186         | Fits 3/4" Pipe             | 1.000      | 25.40   | 2.38 | 60.45   | .38 | 9.65    | 2500             | 19   |
| 177         | Fits 3/4" Pipe             | 1.025      | 26.04   | 2.50 | 63.50   | .28 | 7.11    | 2500             | 19   |
| 182-3       | Fits 1" Pipe               | 1.312      | 33.32   | 3.25 | 82.55   | .31 | 7.87    | 1000             | 15   |
| 182-6       | Fits 1" Pipe               | 1.531      | 38.89   | 3.25 | 82.55   | .31 | 7.87    | 1000             | 15   |
| 182-2       | Fits 1-1/4" Pipe           | 1.625      | 41.28   | 3.25 | 82.55   | .31 | 7.87    | 1000             | 15   |
| 182-4       | Fits 1-1/2" Pipe           | 1.812      | 46.02   | 3.25 | 82.55   | .31 | 7.87    | 1500             | 20   |
| 187-2       | Fits 2" Pipe               | 2.312      | 58.72   | 3.50 | 88.90   | .31 | 7.87    | 1000             | 12   |
| 187         | Fits 2" O.D. Tube          | 2.000      | 50.80   | 3.50 | 88.90   | .31 | 7.87    | 1000             | 15   |