

packaging tube plugs *PTP SERIES*



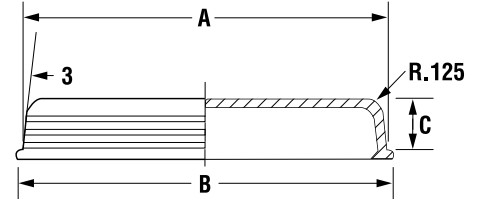
Its shallow design enables it to be placed in the ends of mailing, packaging or shipping tubes or any container that requires a secure fit. Designed with easy-to-use finger-pull tabs that allow for fast and easy removal.

FP Series

Same as the PTP Series except made from a more flexible material.

Specifications

- Material: High-Density Polyethylene
- Colour: White



Part Number	Dimensions						Standard Package	
	A		B		C		Pieces	Lbs.
	in	mm	in	mm	in	mm		
PTP - 1	1.020	25.91	1.120	28.45	.42	10.67	10000	—
PTP - 1½	1.525	38.74	1.625	41.28	.43	10.92	5000	—
PTP - 1¾	1.762	44.75	1.862	47.29	.43	10.92	4000	—
PTP - 2	2.004	50.90	2.104	53.44	.43	10.92	3000	—
PTP - 2¼	2.258	57.35	2.358	59.89	.43	10.92	2300	—
PTP - 2½	2.506	63.65	2.606	66.19	.43	10.92	2000	—
PTP - 3	3.030	76.96	3.160	80.26	.48	12.19	1250	—
PTP - 3½	3.505	89.03	3.605	91.57	.48	12.19	900	—
PTP - 4	4.006	101.75	4.106	104.29	.48	12.19	700	—
PTP - 5	5.040	128.02	5.160	131.06	.50	12.70	350	—
616*	6.110	155.2	6.26	159.00	.562	14.30	250	—
PTP - 6	6.040	153.42	6.200	157.48	.50	12.70	250	—
PTP - 7	7.060	179.32	7.165	181.99	.50	12.70	150	—
PTP - 8	8.025	203.84	8.225	208.92	.50	12.70	125	—
PTP - 10	10.030	254.76	10.183	258.65	.50	12.70	75	—

* has six vertical ribs on plug-in surface - no finger tabs