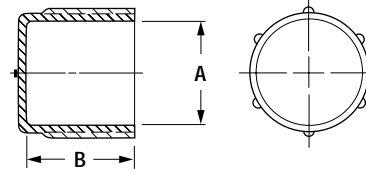


tube caps *RIBBED*



Designed to protect the ends of threaded and non-threaded tubing, rods or packaging tubes with a friction-fit straight-wall design. Used extensively for masking in painting, plating and sandblasting operations. Outside ribs help with the removal process and provide additional protection.



Specifications

- *Material: Low-Density Polyethylene*
- *Colour: Orange*
- *Will fit diameters matching inside (A) dimension*
- *Applicable Spec: MIL-C-5501/9*

Part Number	To Fit Diameter A		Dimension B		Standard Package	
	in	mm	in	mm	Pieces	Lbs..
155	3/8	9.53	.75	19.05	10000	15
157	15/32	11.91	.75	19.05	7500	16
159	7/16	11.13	.63	16.00	10000	14
161	1/2	12.70	.44	11.18	15000	19
176	9/16	14.30	.42	10.67	10000	15