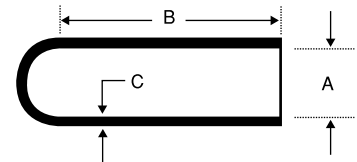




Series SC : SILICONE CAPS

- durable enough for many repeat uses in powder coating, e-coating, anodizing and plating.
- designed for use as a cap but can be used as a plug, when used as a plug the round outside end aids insertion.
- flexible enough to fit out of round applications.
- smaller diameters are colour coded eases size sorting.
- temperature resistant up to 315°C / 600°F and durable for repeat use.



SILICONE CAPS

silicone caps

PART NUMBER	A	B	C	A	B	C	FITS OVER THREAD SIZE	QTY PER BAG
	I N C H E S	M I L L I M E T E R S	M I L L I M E T E R S	M I L L I M E T E R S				
SC .020-8	.020	.500	.060	.51	12.70	1.52		1,000
SC .062-12	.062	.750	.060	1.57	19.05	1.52		1,000
SC .070-16	.070	1.000	.060	1.78	25.40	1.52	M2, 2-56	1,000
SC .080-12	.080	.750	.060	2.03	19.05	1.52		1,000
SC .093-12	.093	.750	.060	2.36	19.05	1.52	M2.5	1,000
SC .093-16	.093	1.000	.060	2.36	25.40	1.52		1,000
SC .100-8	.100	.500	.060	2.54	12.70	1.52	M3, 4-40	1,000
SC .100-16	.100	1.000	.060	2.54	25.40	1.52	M3, 4-40	1,000
SC .109-8	.109	.500	.060	2.77	12.70	1.52		1,000
SC .109-12	.109	.750	.060	2.77	19.05	1.52		1,000
SC .109-16	.109	1.000	.060	2.77	25.40	1.52		1,000
SC .125-8	.125	.500	.060	3.18	12.70	1.52	6-32	1,000
SC .125-16	.125	1.000	.060	3.18	25.40	1.52	6-32	1,000
SC .137-8	.137	.500	.060	3.48	12.70	1.52		1,000
SC .137-16	.137	1.000	.060	3.48	25.40	1.52		1,000
SC .148-12	.148	.750	.060	3.76	19.05	1.52	M4, 8-32	1,000
SC .148-16	.148	1.000	.060	3.76	25.40	1.52	M4, 8-32	1,000
SC .156-8	.156	.500	.060	3.96	12.70	1.52		1,000
SC .156-16	.156	1.000	.060	3.96	25.40	1.52		1,000
SC .156-24	.156	1.500	.060	3.96	38.10	1.52		1,000
SC .172-8	.172	.500	.060	4.37	12.70	1.52		1,000
SC .172-16	.172	1.000	.060	4.37	25.40	1.52	10-24	1,000
SC .172-24	.172	1.500	.060	4.37	38.10	1.52	10-24	1,000
SC .180-16	.180	1.000	.060	4.57	25.40	1.52	M5	1,000
SC .187-8	.187	.500	.060	4.75	12.70	1.52	12-24	1,000
SC .187-16	.187	1.000	.060	4.75	25.40	1.52	12-24	1,000
SC .218-16	.218	1.000	.060	5.54	25.40	1.52		1,000
SC .223-8	.223	.500	.060	5.66	12.70	1.52	M6	1,000
SC .223-16	.223	1.000	.060	5.66	25.40	1.52	M6	1,000
SC .223-24	.223	1.500	.060	5.66	38.10	1.52	M6	500
SC .234-8	.234	.500	.060	5.94	12.70	1.52	1/4-20	1,000
SC .234-16	.234	1.000	.060	5.94	25.40	1.52	1/4-20	1,000
SC .234-24	.234	1.500	.060	5.94	38.10	1.52	1/4-20	500
SC .250-16	.250	1.000	.060	6.35	25.40	1.52		500
SC .250-24	.250	1.500	.060	6.35	38.10	1.52		500
SC .281-8	.281	.500	.060	7.14	12.70	1.52		500
SC .281-16	.281	1.000	.060	7.14	25.40	1.52		500
SC .295-24	.295	1.500	.060	7.49	38.10	1.52	M8, 5/16-18	500
SC .312-16	.312	1.000	.060	7.92	25.40	1.52		500
SC .312-24	.312	1.500	.060	7.92	38.10	1.52		500
SC .343-16	.343	1.000	.060	8.71	25.40	1.52		500
SC .355-24	.355	1.500	.060	9.02	38.10	1.52	3/8-16	500
SC .375-8	.375	.500	.060	9.53	12.70	1.52	M10	500
SC .375-12	.375	.750	.060	9.53	19.05	1.52	M10	500
SC .375-16	.375	1.000	.060	9.53	25.40	1.52	M10	500
SC .375-24	.375	1.500	.060	9.53	38.10	1.52	M10	500
SC .406-16	.406	1.000	.060	10.31	25.40	1.52	7/16-14	500

PART NUMBER	A	B	C	A	B	C	FITS OVER THREAD SIZE	QTY PER BAG
	I N C H E S	M I L L I M E T E R S	M I L L I M E T E R S	M I L L I M E T E R S				
SC .437-16	.437	1.000	.060	11.10	25.40	1.52		500
SC .456-16	.456	1.000	.060	11.58	25.40	1.52	M12	500
SC .456-24	.456	1.500	.060	11.58	38.10	1.52	M12	500
SC .475-64	.475	4.000	.060	12.07	101.60	1.52		100
SC .480-24	.480	1.500	.060	12.19	38.10	1.52	1/2-13	250
SC .500-24	.500	1.500	.060	12.70	38.10	1.52		250
SC .500-48	.500	3.000	.060	12.70	76.20	1.52		200
SC .500-64	.500	4.000	.060	12.70	101.60	1.52		100
SC .535-24	.535	1.500	.060	13.59	38.10	1.52	M14	250
SC .535-48	.535	3.000	.060	13.59	76.20	1.52	M14	200
SC .562-24	.562	1.500	.060	14.27	38.10	1.52	M15	250
SC .600-24	.600	1.500	.060	15.24	38.10	1.52	5/8-11	250
SC .625-24	.625	1.500	.060	15.88	38.10	1.52	M17	250
SC .687-24	.687	1.500	.060	17.45	38.10	1.52	M18	250
SC .687-40	.687	2.500	.060	17.45	63.50	1.52	M18	200
SC .687-72	.687	4.500	.060	17.45	114.30	1.52	M18	250
SC .730-24	.730	1.500	.060	18.54	38.10	1.52	3/4-10 M19	250
SC .750-24	.750	1.500	.060	19.05	38.10	1.52	M20	250
SC .750-32	.750	2.000	.060	19.05	50.80	1.52	M20	250
SC .750-56	.750	3.500	.060	19.05	88.90	1.52	M20	100
SC .812-24	.812	1.500	.060	20.62	38.10	1.52	M22	250
SC .875-24	.875	1.500	.060	22.23	38.10	1.52	7/8-9 M23	200
SC .937-24	.937	1.500	.060	23.80	38.10	1.52	M24	200
SC .970-24	.970	1.500	.060	24.64	38.10	1.52	M25	200
SC .970-64	.970	4.000	.060	24.64	101.60	1.52		100
SC 1.000-24	1.000	1.500	.060	25.40	38.10	1.52	1"-8 M27	200
SC 1.000-32	1.000	2.000	.060	25.40	50.80	1.52		200
SC 1.062-24	1.062	1.500	.060	26.98	38.10	1.52		200
SC 1.062-64	1.062	4.000	.060	26.98	101.60	1.52		100
SC 1.125-24	1.125	1.500	.060	28.58	38.10	1.52	M30	200
SC 1.187-24	1.187	1.500	.060	30.16	38.10	1.52		200
SC 1.250-24	1.250	1.500	.060	31.75	38.10	1.52	M33	200
SC 1.350-28	1.350	1.750	.060	34.30	44.46	1.52	M36	100
SC 1.500-24	1.500	1.500	.060	38.10	38.10	1.52	M39	100
SC 1.625-32	1.625	2.000	.060	41.28	50.80	1.52		50
SC 1.750-24	1.750	1.500	.060	44.45	38.10	1.52		50
SC 1.875-32	1.875	2.000	.060	47.63	50.80	1.52		50
SC 2.000-32	2.000	2.000	.060	50.81	50.81	1.52		50

Above sizes also available in EPDM material.

There are new sizes and styles of masks becoming available on a regular basis, please contact our Sales Department.

For fast service and free samples, call: 1-800-668-3235 Fax: 1-905-791-3178 or Email: sales@capsnplugs.com