

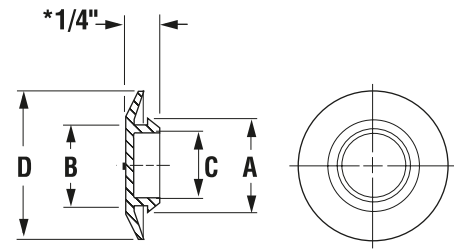
flush style SI SERIES



Provides an attractive, finished appearance for access holes in sheet metal. Widely used on automobile bodies, tanks, appliances or in any application where an attractive appearance is needed. Flexible yet durable. Snap-in ring provides a secure fit.

Specifications

- Material: Low-Density Polyethylene
- Colour: Black



Part Number	To Plug Hole Size	Metal Thickness	Dimensions								Standard Package	
			A		B		C		D		Pieces	Lbs.
			in	mm	in	mm	in	mm	in	mm		
* SI 659	3/8	.02-.05	.410	10.41	.375	9.53	.31	7.87	.75	19.05	5000	5
SI 659-1	3/8	.06-.11	.410	10.41	.375	9.53	.31	7.87	.75	19.05	5000	5
SI 400	7/16	.03-.06	.470	11.94	.437	11.10	.36	9.14	.69	17.53	15000	18
SI 401	9/16	.03-.08	.600	15.24	.560	14.22	.45	11.43	.87	22.10	7000	12
SI 411	1/2	.03-.08	.540	13.72	.500	12.70	.40	10.16	.88	22.35	15000	18
SI 430	5/8	.06-.08	.675	17.15	.615	15.62	.50	12.70	1.06	26.92	10000	23
SI 430-S	5/8	.06-.08	.675	17.15	.625	15.88	.55	13.97	1.06	26.92	15000	17
SI 437	11/16	.03-.08	.710	18.03	.680	17.27	.56	14.22	1.06	26.92	8000	18
SI 412	3/4	.05-.11	.790	20.07	.750	19.05	.62	15.75	1.00	25.40	10000	23
* SI 402	13/16	.03-.08	.850	21.59	.812	20.62	.67	17.02	1.11	28.19	7000	17
SI 438	7/8	.03-.08	.910	23.11	.875	22.23	.75	19.05	1.16	29.46	7000	20
SI 403	15/16	.03-.08	.980	24.89	.937	23.80	.78	19.81	1.31	33.27	4000	14
SI 413	1	.03-.08	1.040	26.42	1.000	25.40	.88	22.35	1.38	35.05	4000	15
SI 465	1-3/32	.03-.08	1.150	29.21	1.090	27.69	1.00	25.40	1.31	33.27	5000	15
* SI 404	1-1/8	.03-.08	1.180	29.97	1.120	28.45	1.01	25.65	1.53	38.86	5000	21
SI 457	1-3/16	.03-.08	1.220	30.99	1.190	30.23	1.05	26.67	1.56	39.62	3500	17
SI 414	1-1/4	.03-.08	1.290	32.77	1.250	31.75	1.12	28.45	1.62	41.15	2500	13
SI 405	1-5/16	.03-.08	1.360	34.54	1.310	33.27	1.14	28.96	1.68	42.67	5000	21
SI 415	1-1/2	.02-.08	1.540	39.12	1.500	38.10	1.40	35.56	1.88	47.75	2000	13
SI 416	1-3/4	.03-.08	1.790	45.47	1.750	44.45	1.62	41.15	2.12	53.85	1500	13
SI 417	2	.03-.08	2.050	52.07	2.000	50.80	1.88	47.75	2.44	61.98	1500	17
SI 406	2-1/8	.03-.08	2.170	55.12	2.100	53.34	1.94	49.28	2.49	63.25	1000	19
SI 419	2-1/2	.03-.08	2.580	65.53	2.520	64.01	2.38	60.45	3.00	76.20	1000	18
SI 472	2-5/8	.03-.08	2.675	67.95	2.645	67.18	2.52	64.01	3.12	79.25	1000	19
SI 421	3	.03-.08	3.060	77.72	3.000	76.20	2.85	72.39	3.38	85.85	500	11
SI 407	3-1/8	.03-.08	3.180	80.77	3.110	78.99	2.94	74.68	3.52	89.41	250	7
SI 408	3-3/8	.03-.08	3.430	87.12	3.375	85.73	3.22	81.79	3.75	95.25	250	7
* SI 409	3-1/2	.03-.11	3.560	90.42	3.500	88.90	3.34	84.84	3.86	98.04	250	7
* SI 425	4	.05-.10	4.060	103.12	4.000	101.60	3.90	99.06	4.50	114.30	350	13
* SI 425-S	4	.05-.10	4.100	104.14	4.000	101.60	3.88	98.55	4.50	114.30	400	19

- * SI 659 .19 Overall Height
- * SI 402 .37 Overall Height
- * SI 404 .43 Overall Height
- * SI 409 .35 Overall Height
- * SI 425 .50 Overall Height
- * SI 425-S.50 Overall Height