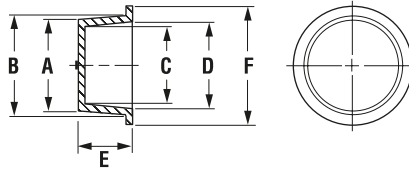


# tapered series

Our most versatile closures!  
Tapered body provides firm friction fit when used as either a cap or a plug. Design lends itself for a secure fit and easy removal. Provides excellent protection against damage, dirt or moisture that occurs during manufacturing, storage or shipping. Recommended for all threaded (Unified and NPT) and non-threaded, internal and external fittings.

**When used as a PLUG:** "B" dimension should be at least .020" larger than diameter to be plugged. Larger diameters may require more interference.

**When used as a CAP:** "C" dimension should be at least .020" less than diameter to be capped. Larger diameters may require more interference.



## Specifications

- **Material:** Low-Density Polyethylene
- **Optional Material:** Flexible TPR: Protection Up To 300°F
- **Colour:** Orange • **Applicable Spec:** MIL-C-5501/7

The bulk packages of 10,000 or more pieces will not have any breakage charges applied unless the ordered quantity is less than 5000 pieces

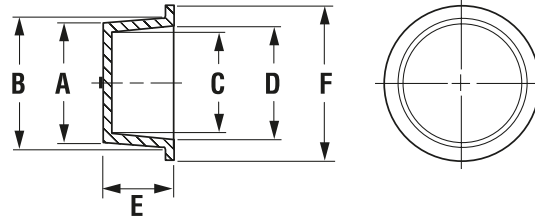
Part No.	PLUG			CAP			Dimensions										Standard Package			
	Thread Sizes			Thread Sizes			TO PLUG				TO CAP				E		F		Pieces	Lbs.
	NPT/BSP	Standard	Metric	NPT/BSP	Standard	Metric	A		B		C		D		in	mm	in	mm		
234-A	-	10/32	M5	-	-	M2/M2.5	.116	2.95	.181	4.60	.052	1.32	.117	2.97	.41	10.41	.31	7.87	25000	7
235-C	-	1/4	M6	-	-	M3/M3.5	.174	4.42	.241	6.12	.110	2.79	.177	4.50	.41	10.41	.38	9.65	30000	11
235-T	-	-	-	-	-	M4	.210	5.33	.275	6.99	.146	3.71	.211	5.36	.34	8.64	.45	11.43	10000	5
235-V	-	-	M7	-	-	M4.5	.209	5.31	.269	6.83	.150	3.81	.210	5.33	.34	8.64	.38	9.65	15000	6
236-X	-	5/16	M8x1	-	-	M5	.239	6.07	.303	7.70	.175	4.45	.239	6.07	.38	9.65	.47	11.94	45000	23
236-L	-	-	-	-	-	M6	.267	6.78	.335	8.51	.205	5.21	.273	6.93	.41	10.41	.47	11.94	20000	11
237-Y	-	3/8	M10x1.25	-	5/16	M7	.299	7.59	.367	9.32	.235	5.97	.303	7.70	.41	10.41	.50	12.70	25000	16
229-Z	1/8	-	-	-	-	-	.331	8.41	.397	10.08	.267	6.78	.333	8.46	.38	9.65	.56	14.22	15000	11
238-D	-	7/16	M12	-	-	M8x1	.362	9.19	.428	10.87	.298	7.57	.364	9.25	.41	10.41	.56	14.22	20000	15
239-E	-	-	M12x1.25	-	3/8	-	.392	9.96	.459	11.66	.328	8.33	.395	10.03	.41	10.41	.59	14.99	20000	17
181	1/4	1/2	M14	1/8	-	M10x1.25	.422	10.72	.486	12.34	.358	9.09	.422	10.72	.41	10.41	.62	15.75	20000	19
240	-	-	M14x1.5	-	7/16	-	.448	11.38	.512	13.00	.384	9.75	.448	11.38	.41	10.41	.66	16.76	7000	8
189-C	-	9/16	-	-	1/2	-	.477	12.12	.547	13.89	.415	10.54	.485	12.32	.31	7.87	.69	17.53	7500	8
189	-	9/16	-	-	1/2	-	.472	11.99	.548	13.92	.408	10.36	.484	12.29	.47	11.94	.69	17.53	10000	13
189-2	-	-	M16	-	-	M12x1.25	.500	12.70	.568	14.43	.436	11.07	.504	12.80	.47	11.94	.72	18.29	10000	12
241	-	5/8	-	1/4	-	-	.533	13.54	.608	15.44	.469	11.91	.544	13.82	.47	11.94	.75	19.05	10000	14
241-S	-	-	-	-	-	-	.552	14.02	.612	15.54	.490	12.45	.550	13.97	.34	8.64	.75	19.05	15000	17
188	3/8	-	M18	-	9/16	-	.551	14.00	.633	16.08	.487	12.37	.569	14.45	.50	12.70	.78	19.81	10000	17
242	-	-	M18x1.5	-	5/8	M14x1.5	.580	14.73	.668	16.97	.518	13.16	.606	15.39	.53	13.46	.84	21.34	7000	12
242-2	-	-	-	-	-	-	.610	15.49	.695	17.65	.549	13.94	.634	16.10	.53	13.46	.84	21.34	7500	13
243	-	3/4	M20	-	-	-	.642	16.31	.729	18.52	.578	14.68	.665	16.89	.50	12.70	.88	22.35	7500	14
191	-	-	M20x1.5	3/8	-	M16x1.5	.678	17.22	.755	19.18	.614	15.60	.691	17.55	.53	13.46	.88	22.35	7500	14
203	1/2	-	M22	-	-	-	.691	17.55	.787	19.99	.627	15.93	.723	18.36	.59	14.99	.94	23.88	5000	12
710	-	-	-	-	-	-	.750	19.05	.805	20.45	.688	17.48	.743	18.87	.19	4.83	.86	21.84	7500	9
245	-	-	M22x1.5	-	3/4	-	.727	18.47	.825	20.96	.663	16.84	.761	19.33	.59	14.99	1.00	25.40	5000	13
246	-	7/8	M24	-	-	M18x1.5	.752	19.10	.849	21.56	.688	17.48	.785	19.94	.59	14.99	1.00	25.40	5000	14
204	-	15/16	M24x2	1/2	-	-	.803	20.40	.912	23.16	.739	18.77	.848	21.54	.66	16.76	1.06	26.92	3500	11
247	-	1	-	-	7/8	M20x1.5	.819	20.80	.933	23.70	.755	19.18	.869	22.07	.62	15.75	1.13	28.70	3000	10
192-2-C	3/4	-	-	-	-	-	.854	21.69	.958	24.33	.790	20.07	.894	22.71	.66	16.76	1.13	28.70	2500	9
192-1	3/4	-	M27	-	-	-	.869	22.07	.973	24.71	.805	20.45	.909	23.09	.75	19.05	1.13	28.70	2500	9
192-2	3/4	-	-	-	-	-	.869	22.07	.973	24.71	.805	20.45	.909	23.09	.66	16.76	1.13	28.70	2500	9
248	-	1-1/16	M27x2	-	-	M22x1.5	.915	23.24	1.040	26.42	.855	21.72	.980	24.89	.72	18.29	1.16	29.46	2500	10
277	-	-	-	-	-	-	.955	24.26	1.040	26.42	.895	22.73	.980	24.89	.50	12.70	1.16	29.46	3500	11
709	-	-	-	-	-	-	1.020	25.91	1.040	26.42	.940	23.88	.960	24.38	.88	22.35	1.31	33.27	1500	10
249-1	-	-	-	-	-	-	.980	24.89	1.049	26.64	.916	23.27	.985	25.02	.50	12.70	1.25	31.75	3000	10
249-2	-	-	-	-	-	-	.950	24.13	1.090	27.69	.890	22.61	1.030	26.16	1.03	26.16	1.25	31.75	1500	8
249	-	-	-	3/4	-	M24x2	.967	24.56	1.092	27.74	.903	22.94	1.028	26.11	.78	19.81	1.25	31.75	2500	12
249-W	-	-	-	-	-	-	.975	24.77	1.104	28.04	.918	23.32	1.047	26.59	.75	19.05	1.44	36.58	2000	9
153	-	-	M30x2	-	1-1/16	-	.997	25.32	1.144	29.06	.933	23.70	1.080	27.43	.78	19.81	1.31	33.27	4000	20
193	1	1-1/4	M33	-	-	M27x2	1.093	27.76	1.219	30.96	1.029	26.14	1.155	29.34	.78	19.81	1.41	35.81	1500	9

tapered series *continued*



**When used as a PLUG:** "B" dimension should be at least .020" larger than diameter to be plugged. Larger diameters may require more interference.

**When used as a CAP:** "C" dimension should be at least .020" less than diameter to be capped. Larger diameters may require more interference.



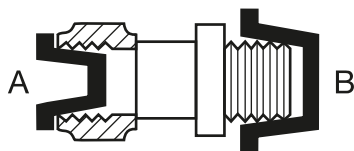
Part No.	PLUG			CAP			Dimensions								Standard Package					
	Thread Sizes			Thread Sizes			PLUG				CAP				E		F		Pieces	Lbs.
	NPT/ BSP	Standard	Metric	NPT/ BSP	Standard	Metric	A	B	C	D	E	F	in	mm	in	mm				
250-S	-	-	-	-	-	-	1.175	29.85	1.284	32.61	1.113	28.27	1.222	31.04	.66	16.76	1.44	36.58	2500	11
250-SW	-	-	-	-	-	-	1.175	29.85	1.284	32.61	1.113	28.27	1.222	31.04	.66	16.76	1.67	42.42	2000	11
250	-	1-5/16	M33x2	-	-	-	1.179	29.95	1.286	32.66	1.115	28.32	1.222	31.04	.75	19.05	1.44	36.58	1500	9
1153	-	-	-	-	-	-	1.276	32.41	1.312	33.32	1.155	29.34	1.190	30.23	.56	14.22	1.38	35.05	2000	15
251	-	-	-	-	-	M30x2	1.226	31.14	1.354	34.39	1.162	29.51	1.290	32.77	.75	19.05	1.50	38.10	1500	10
205	-	-	M36x3	1	1-5/16	-	1.233	31.32	1.358	34.49	1.175	29.85	1.300	33.02	.84	21.34	1.50	38.10	1500	10
253-S	-	1-1/2	-	-	-	-	1.350	34.29	1.465	37.21	1.286	32.66	1.401	35.59	.53	13.46	1.62	41.15	2000	12
252	-	-	-	-	-	-	1.292	32.82	1.356	34.44	1.231	31.27	1.295	32.89	.75	19.05	1.50	38.10	1500	8
253	-	-	M39x3	-	-	M33x2	1.312	33.32	1.465	37.21	1.248	31.70	1.401	35.59	.75	19.05	1.62	41.15	1500	10
727	-	-	-	-	-	-	1.435	36.45	1.500	38.10	1.340	34.04	1.420	36.07	.80	20.32	1.75	44.45	1000	10
253-2	-	-	-	-	-	-	1.344	34.14	1.507	38.28	1.282	32.56	1.445	36.70	.94	23.88	1.77	44.96	1000	9
254-S	-	1-9/16	-	-	-	-	1.447	36.75	1.600	40.64	1.384	35.15	1.537	39.04	.94	23.88	1.75	44.45	1000	9
254	1-1/4	-	-	-	-	M36x3	1.451	36.86	1.601	40.67	1.387	35.23	1.537	39.04	.75	19.05	1.75	44.45	1000	8
194	-	1-5/8	-	-	-	-	1.519	38.58	1.602	40.69	1.455	36.96	1.538	39.07	.75	19.05	1.75	44.45	1800	14
195-F	-	-	-	1-1/4	1-5/8	M39x3	1.560	39.62	1.682	42.72	1.498	38.05	1.620	41.15	.78	19.81	1.88	47.75	3500	26
195-S	-	-	-	1-1/4	1-5/8	-	1.574	41.28	1.688	42.29	1.514	38.46	1.628	41.35	.62	16.76	1.88	47.75	5000	36
255	-	-	-	-	-	-	1.633	41.48	1.750	44.45	1.569	39.85	1.686	42.82	.75	19.05	1.84	46.74	1000	9
1972	1-1/2	1-7/8	-	-	-	-	1.720	43.69	1.850	46.99	1.664	42.27	1.794	45.57	.75	19.05	2.03	51.56	3500	29
196	1-1/2	1-7/8	-	-	-	-	1.752	44.50	1.882	47.80	1.688	42.88	1.818	46.18	.78	19.81	2.00	50.80	3500	32
206	-	-	-	1-1/2	1-7/8	-	1.807	45.90	1.938	49.23	1.743	44.27	1.874	47.60	1.00	25.40	2.16	54.86	1000	13
911	-	-	-	-	-	-	1.865	47.37	1.975	50.17	1.785	45.34	1.895	48.13	.67	17.02	2.38	60.45	2500	32
256	-	-	-	-	-	-	1.847	46.91	2.000	50.80	1.783	45.29	1.936	49.17	1.03	26.16	2.13	54.10	500	6
806	-	-	-	-	-	-	1.950	49.53	2.065	52.45	1.885	47.88	2.000	50.80	.75	19.05	2.20	55.88	2500	26
257	-	-	-	-	-	-	1.903	48.34	2.078	52.78	1.839	46.71	2.014	51.16	1.03	26.16	2.25	57.15	1000	14
258	-	-	-	-	-	-	1.981	50.32	2.133	54.18	1.917	48.69	2.069	52.55	1.00	25.40	2.25	57.15	500	8
258-S	-	-	-	-	-	-	2.020	51.31	2.100	53.34	2.060	52.32	2.140	54.36	.38	9.65	2.59	65.79	1000	13
259	-	-	-	-	-	-	2.017	51.23	2.147	54.53	1.953	49.61	2.083	52.91	.75	19.05	2.31	58.67	500	6
260	-	2-1/4	-	-	-	-	2.070	52.58	2.244	57.00	2.000	50.80	2.174	55.22	1.04	26.42	2.47	62.74	1800	28
261	2	-	-	-	2-1/4	-	2.136	54.25	2.312	58.72	2.074	52.68	2.250	57.15	1.03	26.16	2.56	65.02	500	9
1230	-	-	-	-	-	-	2.280	57.91	2.400	60.96	2.216	56.29	2.336	59.33	.75	19.05	2.80	71.12	1500	22
262	-	-	-	-	-	-	2.129	54.08	2.408	61.16	2.065	52.45	2.344	59.54	1.04	26.42	2.53	64.26	500	9
207	-	-	-	2	-	-	2.300	58.42	2.464	62.59	2.236	56.79	2.400	60.96	1.03	26.16	2.62	66.55	500	9
708	-	-	-	-	-	-	2.300	58.42	2.464	62.59	2.220	56.39	2.383	60.53	.75	19.05	2.66	67.56	2000	32
263	-	-	-	-	2-1/2	-	2.396	60.86	2.604	66.14	2.332	59.23	2.540	64.52	1.16	29.46	2.81	71.37	500	10
264	-	-	-	-	-	-	2.482	63.04	2.645	67.18	2.418	61.42	2.581	65.56	.66	16.76	2.78	70.61	500	8
265	-	-	-	-	-	-	2.311	58.70	2.650	67.31	2.247	57.07	2.586	65.68	1.00	25.40	2.78	70.61	500	10
267	-	-	-	-	-	-	2.561	65.05	2.690	68.33	2.497	63.42	2.626	66.70	.75	19.05	2.88	73.15	500	9
266	-	-	-	-	-	-	2.457	62.41	2.750	69.85	2.395	60.83	2.688	68.28	1.00	25.40	2.88	73.15	500	10
199	2-1/2	-	-	-	-	-	2.641	67.08	2.790	70.87	2.579	65.51	2.728	69.29	.784	19.91	2.97	75.44	500	10
2156	-	-	-	-	-	-	2.655	67.44	2.788	70.82	2.595	65.91	2.728	69.29	.50	12.70	2.97	75.44	1000	15

# extra-large tapered series

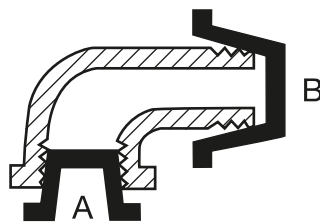
When used as a **PLUG**: "B" dimension should be at least .020" larger than diameter to be plugged. Larger diameters may require more interference.  
 When used as a **CAP**: "C" dimension should be at least .020" less than diameter to be capped. Larger diameters may require more interference.

Part No.	PLUG			CAP			Dimensions										Standard Package			
	Thread Sizes			Thread Sizes			TO PLUG		TO CAP				E		F					
	NPT/ BSP	Standard	Metric	NPT/ BSP	Standard	Metric	A in	A mm	B in	B mm	C in	C mm	D in	D mm	E in	E mm	F in	F mm	Pieces	Lbs.
862	-	-	-	-	-	-	2.706	68.73	2.870	72.90	2.626	66.70	2.790	70.87	.72	18.29	3.06	77.72	500	11
268	-	3	-	-	-	-	2.850	72.39	2.982	75.74	2.786	70.76	2.918	74.12	.75	19.05	3.25	82.55	250	6
208	M75, M76	-	-	2-1/2	-	-	2.720	69.09	2.990	75.95	2.656	67.46	2.926	74.32	1.00	25.40	3.13	79.50	500	11
2046	-	-	-	-	-	-	2.975	75.57	3.103	78.82	2.915	74.04	3.041	77.24	.75	19.05	3.34	84.84	1200	24
228	-	-	-	-	-	-	2.996	76.10	3.159	80.24	2.916	74.07	3.079	78.21	.47	11.94	3.41	86.61	500	11
269	-	-	-	-	-	-	2.980	75.69	3.244	82.40	2.910	73.91	3.174	80.62	1.00	25.40	3.38	85.85	250	7
270	-	-	-	-	-	-	3.088	78.44	3.367	85.52	3.018	76.66	3.297	83.74	1.00	25.40	3.50	88.90	250	8
200	3	-	-	-	-	-	3.320	84.33	3.452	87.68	3.250	82.55	3.382	85.90	.75	19.05	3.63	92.20	500	14
209	-	-	-	3	-	-	3.270	83.06	3.562	90.47	3.200	81.28	3.492	88.70	1.12	28.45	3.69	93.73	250	9
338	-	-	-	-	-	-	3.466	88.04	3.602	91.49	3.406	86.51	3.542	89.97	.75	19.05	3.88	98.55	250	8
341	-	-	-	-	-	-	3.552	90.22	3.732	94.79	3.478	88.34	3.658	92.91	1.00	25.40	4.00	101.60	600	22
339	-	-	-	-	-	-	3.676	93.37	3.802	96.57	3.596	91.34	3.722	94.54	.75	19.05	4.00	101.60	250	9
303	3-1/2	-	-	-	-	-	3.790	96.27	3.920	99.57	3.710	94.23	3.840	97.54	.75	19.05	4.13	104.90	250	9
340	-	-	-	3-1/2	-	-	3.928	99.77	4.074	103.48	3.848	97.74	3.994	101.45	.75	19.05	4.38	111.25	700	27
405	-	-	-	-	-	-	4.020	102.11	4.140	105.16	3.940	100.08	4.060	103.12	.75	19.05	4.53	115.06	600	24
406	4	-	-	-	-	-	4.214	107.04	4.459	113.26	4.134	105.00	4.379	111.23	1.00	25.40	4.94	125.48	400	23
342	-	-	-	4	-	-	4.368	110.95	4.622	117.40	4.288	108.92	4.542	115.37	1.00	25.40	5.00	127.00	400	22
343	-	-	-	-	-	-	4.638	117.81	4.852	123.24	4.568	116.03	4.782	121.46	.88	22.35	5.25	133.35	400	19
407	-	-	-	-	-	-	4.980	126.49	5.100	129.54	4.900	124.46	5.020	127.51	.69	17.53	5.44	138.18	450	25
344	5	-	-	-	-	-	5.326	135.28	5.494	139.55	5.217	132.51	5.385	136.78	.88	22.35	5.88	149.35	250	23
345	-	-	-	5	-	-	5.470	138.94	5.620	142.75	5.390	136.91	5.540	140.72	1.00	25.40	6.13	155.70	250	20
346	-	-	-	-	-	-	5.696	144.68	5.874	149.20	5.606	142.39	5.784	146.91	1.00	25.40	6.25	158.75	200	18
351	-	-	-	-	-	-	6.008	152.60	6.184	157.07	5.918	150.32	6.094	154.79	1.00	25.40	6.63	168.40	200	20
352	6	-	-	-	-	-	6.398	162.51	6.564	166.73	6.329	160.76	6.500	165.10	.88	22.35	6.94	176.28	200	18
365	-	-	-	6	-	-	6.668	169.37	6.774	172.06	6.562	166.67	6.668	169.37	1.50	38.10	7.19	182.63	100	17
366	-	-	-	-	-	-	7.048	179.02	7.124	180.95	6.961	176.81	7.038	178.77	1.00	25.40	7.62	193.55	150	20
367	-	-	-	-	-	-	7.338	186.39	7.656	194.46	7.253	184.23	7.575	192.41	1.00	25.40	7.94	201.68	150	21
368	-	-	-	-	-	-	7.658	194.51	7.846	199.29	7.574	192.38	7.762	197.15	1.00	25.40	8.50	215.90	160	30
369	-	-	-	-	-	-	7.968	202.39	8.146	206.91	7.877	200.08	8.058	204.67	1.00	25.40	8.38	212.85	160	25
370	-	-	-	-	-	-	8.668	220.17	8.732	221.79	8.558	217.37	8.622	219.00	1.50	38.10	9.13	231.90	75	18
390	-	-	-	-	-	-	9.950	252.73	10.130	257.30	9.810	249.17	9.980	253.49	1.00	25.40	10.50	266.70	75	24

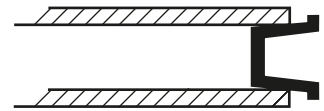
Recommended closures for tube and hydraulic fittings.



Recommended closures for threaded external and internal N.P.T. fittings. Based on average tapped hole fit. It is suggested that sample closure be tried for size before ordering in quantity.



Recommended closures for unthreaded standard weight pipe.



Note: For caps to cover the O.D. of pipe see our CE Series (page42)

As Plugs (A)	As Caps (B)	Dash No.	Tubing O.D.	Thread
236X	237Y	-2	1/8	5/16-24
237Y	239E	-3	3/16	3/8-24
238D	240	-4	7/16	7/16-20
181	189	-5	5/16	1/2-20
189	188	-6	3/8	9/16-18
241	242	-	3/8	5/8-18
243	245	-8	1/2	3/4-16
246	247	-10	5/8	7/8-14
248	153	-12	3/4	1-1/16-12
250	205	-16	1	1-5/16-12
194	195F	-20	1-1/4	1-5/8-12
196	206	-24	1-1/2	1-7/8-12
260	261	-28	1-3/4	2-1/4-12
207	263	-32	2	2-1/2-12
268	-	-40	2-1/2	3-12

As Plugs (A)	As Caps (B)	Size
229Z	181	1/8
181	241	1/4
188	191	3/8
203	204	1/2
192-2	153	3/4
193	205	1
254	195F	1-1/4
196	206	1-1/2
261	207	2
199	208	2-1/2
200	209	3
303	340	3-1/2
406	342	4
344	345	5
352	365	6

As Plugs*	Size
236X	1/8
229Z	1/4
189	3/8
242	1/2
246	3/4
249	1
253	1-1/4
195F	1-1/2
258	2
263	2-1/2
228	3
338	3-1/2
405	4
407	5
351	6
369	8

All dimensions are in INCHES unless otherwise stated.

For fast service and free samples, call: 1-800-668-3235 Fax: 1-905-791-3178 or Email: sales@capsnplugs.com