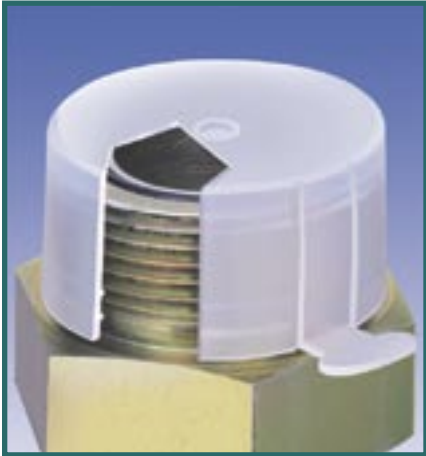


tear-tab (straight-thread) caps TU SERIES



Protect threads from damage. Easy-to-use tear-tab caps employ friction for snug fit. To remove, simply pull tear tab and discard.

Specifications

- Material: Low-Density Polyethylene
- Colour: Natural

| Part Number | To Cap Thread Size | SAE/JIC Fitting Size | Dimensions | | | | Standard Package | |
|-------------|--------------------|----------------------|------------|-------|------|-------|------------------|------|
| | | | in | A mm | in | B mm | Pieces | Lbs. |
| TU 3 | 3/8 | 3 | .367 | 9.32 | .44 | 11.18 | 7500 | 10 |
| TU 4 | 7/16 | 4 | .428 | 10.87 | .46 | 11.68 | 5000 | 7 |
| TU 5 | 1/2 | 5 | .492 | 12.50 | .46 | 11.68 | 5000 | 8 |
| TU 6 | 9/16 | 6 | .554 | 14.07 | .48 | 12.19 | 3500 | 7 |
| TU 6X | 5/8 | - | .616 | 15.65 | .48 | 12.19 | 3500 | 7 |
| TU 7 | 11/16 | 7 | .678 | 17.22 | .48 | 12.19 | 2500 | 6 |
| TU 8 | 3/4 | 8 | .741 | 18.82 | .56 | 14.22 | 4000 | 11 |
| TU 9 | 13/16 | 9 | .803 | 20.40 | .56 | 14.22 | 2500 | 8 |
| TU 10 | 7/8 | 10 | .865 | 21.97 | .65 | 16.51 | 2500 | 9 |
| TU 11 | 1 | 11 | .990 | 25.15 | .65 | 16.51 | 3000 | 13 |
| TU 12 | 1-1/16 | 12 | 1.053 | 26.75 | .75 | 19.05 | 2500 | 13 |
| TU 13 | 1-3/16 | 13 | 1.178 | 29.92 | .75 | 19.05 | 2000 | 12 |
| TU 16 | 1-5/16 | 16 | 1.303 | 33.10 | .75 | 19.05 | 1500 | 10 |
| TU 17 | 1-7/16 | 17 | 1.428 | 36.27 | .75 | 19.05 | 500 | 4 |
| TU 20 | 1-5/8 | 20 | 1.616 | 41.05 | .82 | 20.83 | 750 | 7 |
| TU 21 | 1-11/16 | 21 | 1.678 | 42.62 | .82 | 20.83 | 500 | 6 |
| TU 24 | 1-7/8 | 24 | 1.866 | 47.40 | .95 | 24.13 | 500 | 7 |
| TU 32 | 2-1/2 | 32 | 2.491 | 63.27 | 1.10 | 27.94 | 350 | 8 |

