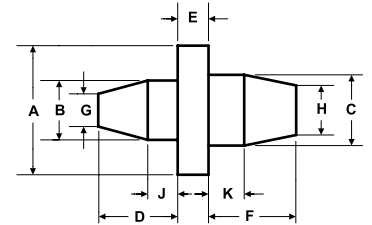


SILICONE WASHER PLUGS Series WP



- tapered design insures easy insertion for a firm fit.
- the plug rim masks the grounding area around hole.
- one plug can fit two hole sizes while second plug acts as a pull tab.
- sizes available to fit both metric and standard threads.
- contact our Sales Department for sizes and pricing.
- temperature resistant up to 315°C / 600°F and durable for repeat use.

| PART NUMBER | FITS THREADS | A | B | C | D | E | F | G | H | J | K | QTY PER BAG |
|-------------|---------------------|------|------|------|------|------|------|------|------|------|------|-------------|
| | | in | in | in | in | in | in | in | in | in | in | |
| WP-110 | M3 | .276 | .110 | .146 | .228 | .197 | .291 | .055 | .075 | .079 | .079 | 1000 |
| WP-130 | M6 | .500 | .130 | .209 | .295 | .197 | .394 | .079 | .118 | .098 | .118 | 1000 |
| WP-142 | | .311 | .141 | .181 | .500 | .197 | .500 | .091 | .118 | .098 | .098 | 1000 |
| WP-145 | M5, M4 | .354 | .141 | .185 | .283 | .197 | .370 | .071 | .094 | .079 | .094 | 1000 |
| WP-177 | 1/4-20, 3/16, M5 | .394 | .177 | .224 | .354 | .197 | .449 | .091 | .110 | .091 | .110 | 1000 |
| WP-200 | 5/16-18, M8 | .374 | .201 | .276 | .417 | .197 | .528 | .098 | .138 | .102 | .134 | 500 |
| WP-215 | 5/16-18, M8 | .374 | .201 | .276 | .500 | .197 | .500 | .138 | .177 | .118 | .118 | 500 |
| WP-220 | M6 | .492 | .207 | .264 | .417 | .197 | .528 | .102 | .134 | .102 | .134 | 500 |
| WP-279 | 5/16-18, 3/8-16, M8 | .669 | .280 | .343 | .559 | .197 | .685 | .142 | .169 | .142 | .169 | 500 |
| WP-346 | 3/8-16 | .626 | .346 | .413 | .500 | .197 | .500 | .287 | .350 | .177 | .177 | 500 |
| WP-378 | 7/16-14, M10 | .827 | .378 | .421 | .756 | .197 | .843 | .189 | .213 | .189 | .213 | 250 |
| WP-429 | M12, M14 | .945 | .429 | .500 | .858 | .197 | 1.00 | .217 | .252 | .217 | .252 | 250 |
| WP-551 | M16 | .787 | .551 | .689 | .500 | .197 | .500 | .453 | .551 | .138 | .138 | 250 |



WP SERIES WASHER PLUGS